



TABLE OF CONTENTS

SECTION	PAGE
1.0 SCOPE	2
2.0 APPLICABLE DOCUMENTS AND SPECIFICATIONS	2
3.0 RATINGS	2
4.0 ELECTRICAL PERFORMANCE	3
5.0 MECHANICAL PERFORMANCE	4-5
6.0 ENVIRONMENTAL PERFORMANCE	6-7
7.0 TEST SEQUENCE	8
APPENDICES, RECOMMENDED TEST METHODS	9-13

REV.	C	C	C	C	C	C	C	C	C	C	C	C	C									
	1	2	3	4	5	6	7	8	9	10	11	12	13									
REVISE ON PC ONLY								TITLE:		PRODUCT SPECIFICATION FOR 2.54mm SIM Conn SMT												
C	UPDATED PRODUCT SPEC. ECN E2003-0092 26/07/02 D.C.																					
THIS DOCUMENT CONTAINS INFORMATION THAT IS PROPRIETARY TO MOLEX INC. AND SHOULD NOT BE USED WITHOUT WRITTEN PERMISSION																						
REV.	DESCRIPTION																					
DESIGN CONTROL MXI				STATUS RELEASE				WRITTEN BY: GWARNER			CHECKED BY:			APPROVED BY:			DATE: YR/MO/DAY 96/12/13					
DOCUMENT NUMBER PS-99020-0071																FILENAME PS0071.LWP		SHEET 1 of 13				
ES-40000-3996 REV. A SHEET 3 95/MAR/10 EC U5-0926DCBRD03.LWP																						



PRODUCT SPECIFICATION



LANGUAGE

English

1.0 SCOPE

This specification defines the performance for the 2.54 mm pitch SIM pcb connector 91228, and mating card holders 91236 and 91356 for usage with the Plug-in SIM as specified by the GSM 11.11 Version 5.3.0: July 1999 specification.

NOTE: Normal force at maximum deflection see Test Ref. 5.10.

2.0 APPLICABLE DOCUMENTS AND SPECIFICATIONS

See sales drawing and other sections of this specification for the relevant reference documents and specifications. In cases where the specification differs from the product drawings, the product drawings take precedence.

Description	Document
SIM pcb connector	SDA-91228
Card Holder	SDA-91236 SD-91356-001

3.0 RATINGS

3.1	Current	0.5 Amp maximum per contact
3.2	Voltage	50 V DC (maximum)
3.3	Durability	5000 mating cycles
3.4	Operating temperature range	-30°C to +85°C
3.5	Storage temperature range	-40°C to +90°C

REVISE ON PC ONLY		TITLE:	
C		PRODUCTION SPECIFICATION FOR 2.54mm SIM Conn SMT	
		THIS DOCUMENT CONTAINS INFORMATION THAT IS PROPRIETARY TO MOLEX INC. AND MUST NOT BE USED WITHOUT WRITTEN PERMISSION	
REV.	DESCRIPTION	FILENAME	SHEET
	DOCUMENT NUMBER PS-99020-0071	PS0071.LWP	2
ES-40000-3996 REV. A SHEET 4 95/MAR/10 EC U5-0926 DCBRD03.LWP			



PRODUCT SPECIFICATION



LANGUAGE

English

4.0 ELECTRICAL PERFORMANCE

See section 7.0 for test sequence.

Test Ref.	Item	Test Condition	Requirements
4.1.	Contact Resistance (IEC 512-2,test2a)	Mated connector with dry circuit of 20mV, 100mA maximum, per Appendix 1	Initial Value <50mΩ
4.2	Insulation Resistance (IEC 512-2,test 3a)	Unmated connector with 500 V DC between adjacent contacts	1000 MΩ minimum
4.3	Dielectric Strength (IEC 512-2,test 4a)	Unmated connector with 1000 V AC for 1 minute between adjacent contacts, as per Appendix 2	No voltage breakdown

REVISE ON PC ONLY

TITLE:

C

**PRODUCTION SPECIFICATION FOR
2.54mm SIM Conn SMT**

REV.

DESCRIPTION

THIS DOCUMENT CONTAINS INFORMATION THAT IS PROPRIETARY TO MOLEX INC. AND MUST NOT BE USED WITHOUT WRITTEN PERMISSION

DOCUMENT NUMBER

PS-99020-0071

FILENAME
PS0071.LWP

SHEET
3



PRODUCT SPECIFICATION



LANGUAGE

English

5.0 MECHANICAL PERFORMANCE

Test Ref.	Item	Test Condition	Requirements
5.1	Durability	Mate connector with SIM card inserted in holder at a rate of 10 cycles per minute to 5000 cycles. Use push button for card ejection, as per Appendix 3	Appearance - no damage. Maximum change from initial contact resistance = 20mΩ
5.2	Vibration (IEC 68-2-6)	10-150 Hz 0.15mm or 2g, duration 40 minutes, total 5 cycles in X,Y,Z axes	<1μsecond discontinuity. Maximum change from initial contact resistance = 20mΩ
5.3	Shock (IEC 68-2-27)	50g/11m sec ½ Sine, 3 shocks each of X,Y,Z axes, total 18 shocks	<1μsecond discontinuity. Maximum change from initial contact resistance = 20mΩ
5.4	Solder Tab Destruction Test	Apply a 4.9 N load for 1 min in all directions, as per Appendix 4	No damage to solder joints (cracks or damage)
5.5	Mating Force	Mate connectors at a rate of 25 ± 3 mm/min	Mating Force 4.9 N max
5.6	Unmating Force	Unmate connectors at a rate of 25 ± 3 mm/min	Unmating Force (push button force) 20N max
5.7	Card Holder Retention Force (latch enabled)	Pull card holder axially at 25-50 mm/min.	Retention Force 5N min
5.8	Terminal/Housing Retention Force	Apply an axial load to a terminal assembled in the housing at a speed of 25-50mm/min, as per Appendix 5	Retention Force 2.9 N min
Contd. next page			

REVISE ON PC ONLY

TITLE:

C

PRODUCTION SPECIFICATION FOR 2.54mm SIM Conn SMT

REV.

DESCRIPTION

THIS DOCUMENT CONTAINS INFORMATION THAT IS PROPRIETARY TO MOLEX INC. AND MUST NOT BE USED WITHOUT WRITTEN PERMISSION

DOCUMENT NUMBER

PS-99020-0071

FILENAME

PS0071.LWP

SHEET

4



PRODUCT SPECIFICATION



LANGUAGE

English

Test Ref.	Item	Test Condition	Requirements
5.9	Multi-axis Function Test for PCB Mounted Housing.	Apply Forces in all 4 directions, as per Appendix 6	F1/F2/F3/F4/F5>40N
5.10	Normal Force at maximum deflection	Measure Normal Force at maximum deflection shown in Appendix 8	Maximum Normal Force <= 0.7N.

REVISE ON PC ONLY

TITLE:

C

**PRODUCTION SPECIFICATION FOR
2.54mm SIM Conn SMT**

REV.

DESCRIPTION

THIS DOCUMENT CONTAINS INFORMATION THAT IS PROPRIETARY TO MOLEX INC. AND MUST NOT BE USED WITHOUT WRITTEN PERMISSION

DOCUMENT NUMBER

PS-99020-0071

FILENAME
PS0071.LWP

SHEET
5



PRODUCT SPECIFICATION



LANGUAGE

English

6.0 ENVIRONMENTAL PERFORMANCE

Test Ref.	Item	Test Condition	Requirements
6.1	Resistance to solder conditions	a) Sample to be passed twice through reflow oven according to temp profile shown in appendix 7. One hour cooling between passes. b) Manual soldering at solder temp. of $300 \pm 5^{\circ}\text{C}$ for 3 sec.	Appearance - no damage
6.2	Solderability (IEC 68-2-20, test Ta, method 1)	Samples to be steam aged for 16 hrs using a steam aging chamber, or equivalent. Solder temp. $235 \pm 5^{\circ}\text{C}$, wetting time 3 sec.	95% of immersed area must show no voids, pin holes, etc.
6.3	Damp Heat Cyclic (IEC 68-2-30, variant 1)	Upper air temp. $25-55^{\circ}\text{C}$ for 6 cycles, duration 6 days Recovery is 2 hrs at std. atmospheric condition.	Appearance - no damage. Maximum change from initial contact resistance = $20\text{m}\Omega$
6.4	Salt Spray (IEC 512-6, test 11f)	$5 \pm 1\%$ salt solution Duration 48 hrs	Appearance - no damage. Maximum change from initial contact resistance = $20\text{m}\Omega$
6.5	Long Term Dry Heat	105°C for 1000 hours	Appearance - no damage. Maximum change from initial contact resistance = $20\text{m}\Omega$
Contd. next page			

REVISE ON PC ONLY

TITLE:

C

**PRODUCTION SPECIFICATION FOR
2.54mm SIM Conn SMT**

REV.

DESCRIPTION

THIS DOCUMENT CONTAINS INFORMATION THAT IS PROPRIETARY TO MOLEX INC. AND MUST NOT BE USED WITHOUT WRITTEN PERMISSION

DOCUMENT NUMBER

PS-99020-0071

FILENAME

PS0071.LWP

SHEET

6



PRODUCT SPECIFICATION



LANGUAGE

English

Test Ref.	Item	Test Condition	Requirements
6.6	Temperature Change (IEC 68-2-14)	Ta = -30°C, Tb =85°C, rate of change of temperature 1±0.2 C /minute 8 hours/cycle for 5 cycles Recovery is 2 hrs at std. atmospheric condition.	Appearance - no damage. Maximum change from initial contact resistance = 20mΩ
6.7	Thermal Shock (IEC 68-2-14)	-40°C to +85°C 5 cycles per hour (total 5 hours)	Appearance - no damage. Maximum change from initial contact resistance = 20mΩ
6.8	SO ₂ (IEC 68-2-42-KC)	Mated connectors exposed to 10 ±3ppm of SO ₂ gas with 85-90% humidity at 40 ±2°C for 96 hours.	Appearance - no damage. Maximum change from initial contact resistance = 20mΩ
6.9	Temperature Rise Test	Mate connector and measure the temperature rise of the contacts when the max. rated DC current is applied	Temperature rise of 30 °C max
6.10	Cold Resistance	Mate connectors and expose to -40 ±3°C for 96 hours. Allow samples to reach room temp (1hr) before measurement.	Appearance - no damage. Maximum change from initial contact resistance = 20mΩ
6.11	Heat Resistance	Mate connectors and expose to 85 ±2°C for 96 hours. Allow samples to reach room temp (1hr) before measurement.	Appearance - no damage. Maximum change from initial contact resistance = 20mΩ

REVISE ON PC ONLY

TITLE:

C

PRODUCTION SPECIFICATION FOR
2.54mm SIM Conn SMT

REV.

DESCRIPTION

THIS DOCUMENT CONTAINS INFORMATION THAT IS PROPRIETARY TO MOLEX INC. AND MUST NOT BE USED WITHOUT WRITTEN PERMISSION

DOCUMENT NUMBER

PS-99020-0071

FILENAME

PS0071.LWP

SHEET

7



PRODUCT SPECIFICATION



LANGUAGE

English

7.0 TEST GROUPINGS

Test Ref.	Test Item	GP1	GP2	GP3	GP4	GP5
4.1	Contact Resistance	2,4,6	2,8,12	2,4,6,8	2,4,6	
4.2	Insulation Resistance		5,13			
4.3	Dielectric Strength		6,14			
5.1	Durability		7			
5.2	Vibration					
5.3	Shock				5	
5.4	Solder Tab Destruction Test.					2
5.5	Mating Force.		3,10			2
5.6	Unmating Force.		4,9			
5.7	Card Retention Force.					2
5.8	Terminal/Housing Retention Force					2
5.9	Multiaction Function Test for PCB Mounted Housing					2
5.10	Normal Force at maximum deflection	3,7				
6.1	Resistance to Solder Conditions	1	1	1	1	1
6.2	Solderability					2
6.3	Damp Heat Cyclic		11			
6.4	Salt Spray			5		
6.5	Long Term Dry Heat	5				
6.6	Temp. Change				3	
6.7	Thermal Shock			3		
6.8	SO ₂				7	
6.9	Temperature Rise					2
6.1	Cold Resistance			7		
6.11	Heat Resistance					2

REVISE ON PC ONLY

TITLE:

C

PRODUCTION SPECIFICATION FOR 2.54mm SIM Conn SMT

REV.

DESCRIPTION

THIS DOCUMENT CONTAINS INFORMATION THAT IS PROPRIETARY TO MOLEX INC. AND MUST NOT BE USED WITHOUT WRITTEN PERMISSION

DOCUMENT NUMBER

PS-99020-0071

FILENAME

PS0071.LWP

SHEET

8

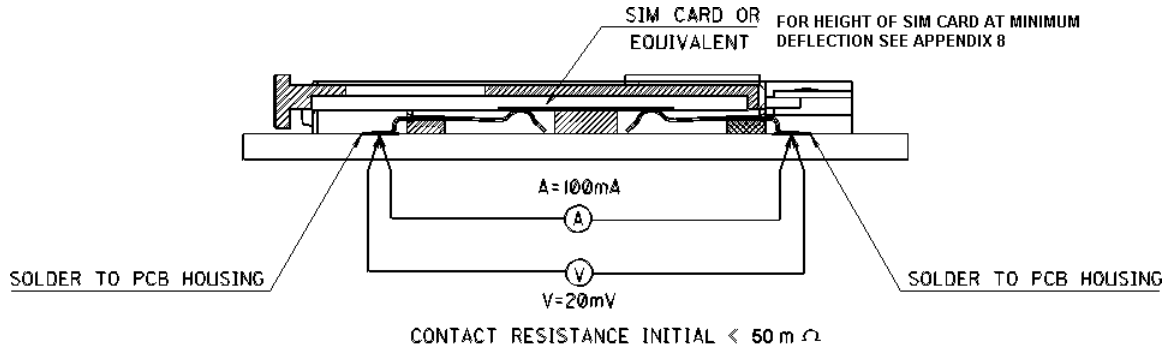


PRODUCT SPECIFICATION



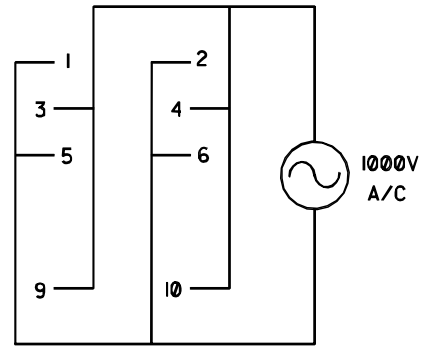
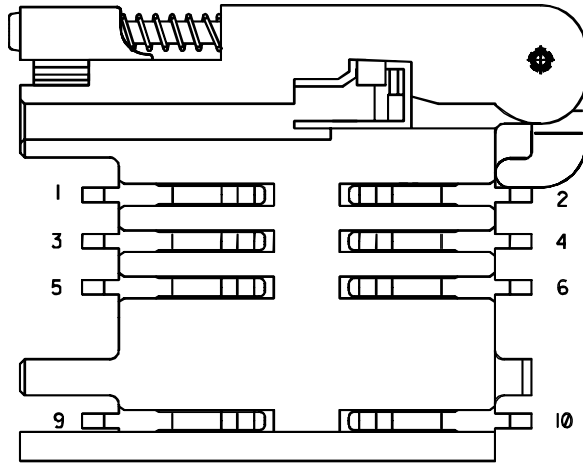
LANGUAGE
English

Appendix 1:



Contact Resistance Measurement (4.1)

Appendix 2:



DIELECTRIC STRENGTH WIRING DIAGRAM

Dielectric Strength (4.3)

REVISE ON PC ONLY		TITLE:		
C		PRODUCTION SPECIFICATION FOR 2.54mm SIM Conn SMT		
	REV.	DESCRIPTION	THIS DOCUMENT CONTAINS INFORMATION THAT IS PROPRIETARY TO MOLEX INC. AND MUST NOT BE USED WITHOUT WRITTEN PERMISSION	
DOCUMENT NUMBER PS-99020-0071		FILENAME PS0071.LWP	SHEET 9	
ES-40000-3996 REV. A SHEET 4 95/MAR/10 EC U5-0926 DCBRD03.LWP				



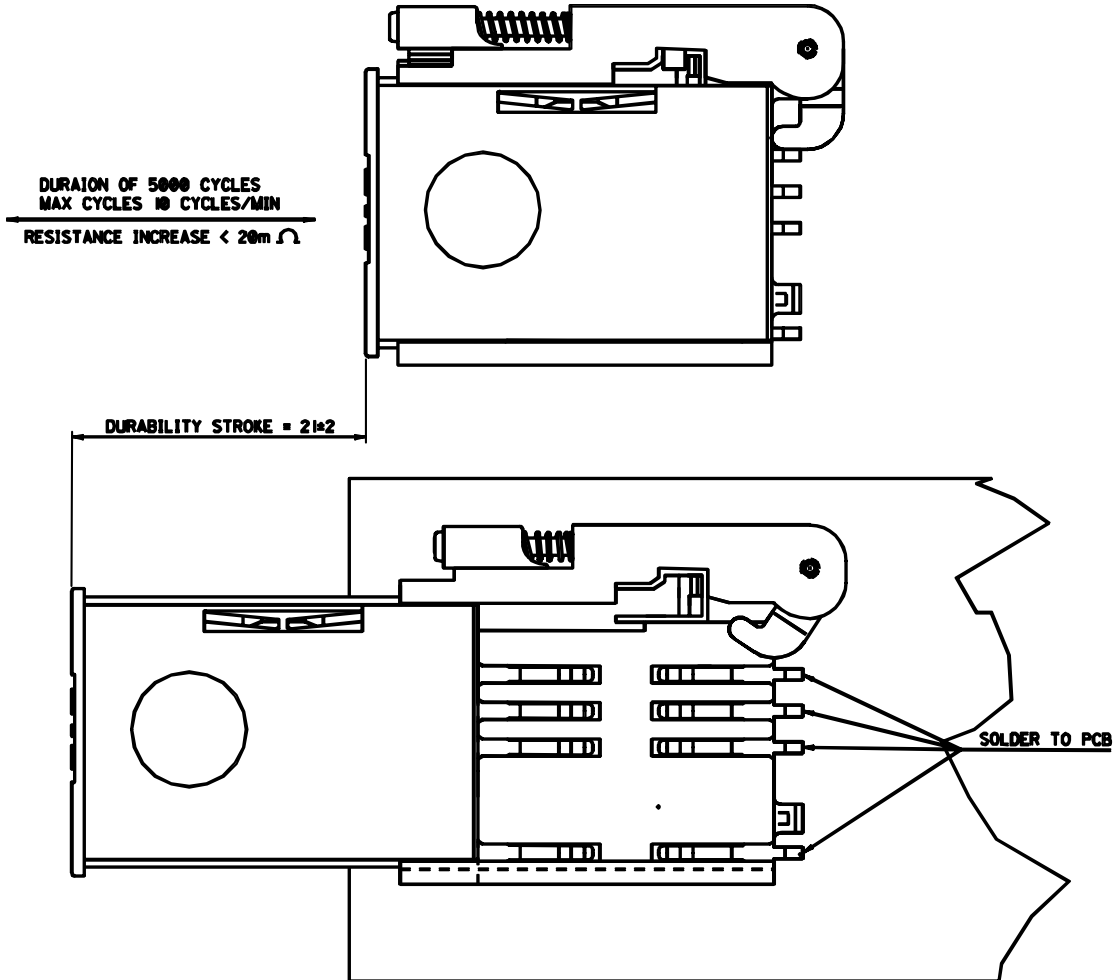
PRODUCT SPECIFICATION



LANGUAGE

English

Appendix 3:

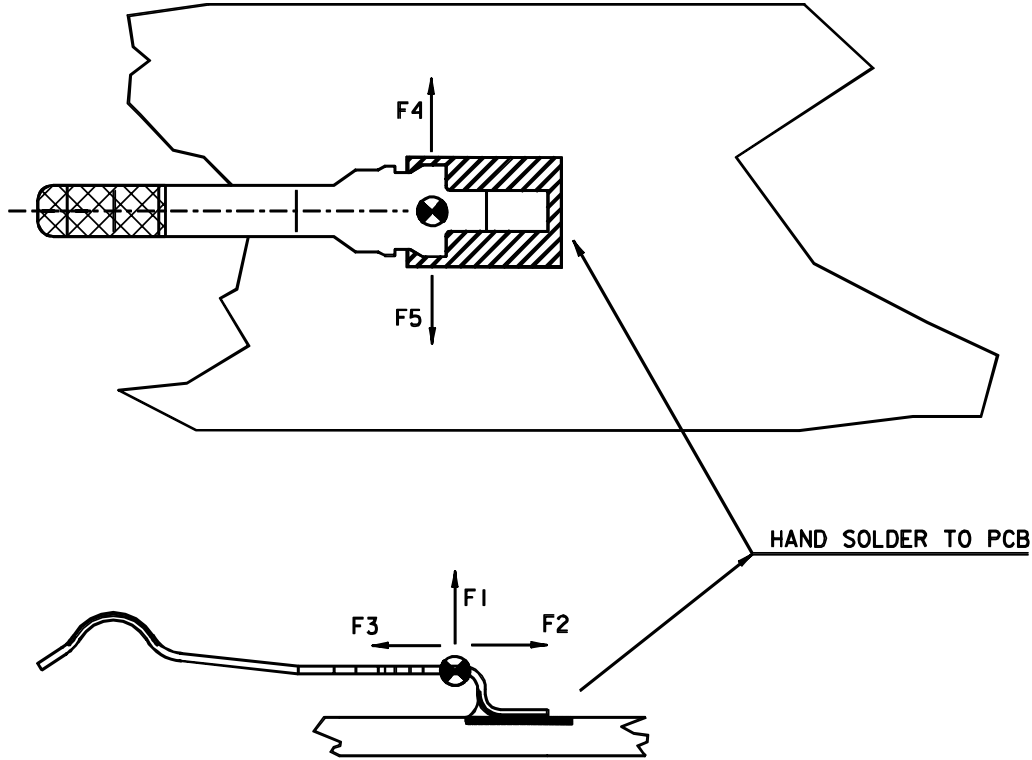


Durability (5.1)

REVISE ON PC ONLY		TITLE:	
C		PRODUCTION SPECIFICATION FOR 2.54mm SIM Conn SMT	
	REV.	DESCRIPTION	THIS DOCUMENT CONTAINS INFORMATION THAT IS PROPRIETARY TO MOLEX INC. AND MUST NOT BE USED WITHOUT WRITTEN PERMISSION
DOCUMENT NUMBER PS-99020-0071		FILENAME PS0071.LWP	SHEET 10
ES-40000-3996 REV. A SHEET 4 95/MAR/10 EC U5-0926 DCBRD03.LWP			

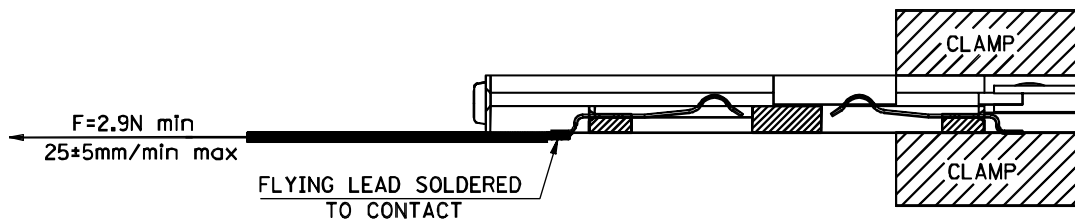


Appendix 4:



Solder Tab Destruct Test (5.4)

Appendix 5:



Terminal/Housing Retention Force (5.8)

REVISE ON PC ONLY		TITLE:	
C		PRODUCTION SPECIFICATION FOR 2.54mm SIM Conn SMT	
	REV.	DESCRIPTION	THIS DOCUMENT CONTAINS INFORMATION THAT IS PROPRIETARY TO MOLEX INC. AND MUST NOT BE USED WITHOUT WRITTEN PERMISSION
DOCUMENT NUMBER PS-99020-0071		FILENAME PS0071.LWP	SHEET 11
ES-40000-3996 REV. A SHEET 4 95/MAR/10 EC U5-0926 DCBRD03.LWP			

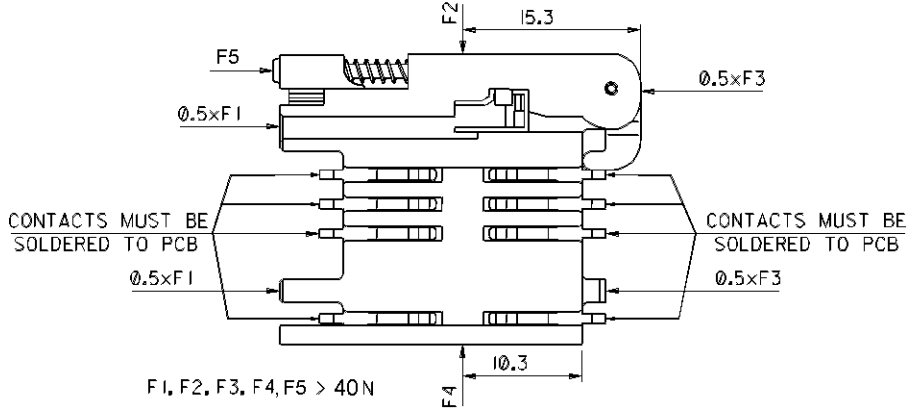


PRODUCT SPECIFICATION



LANGUAGE
English

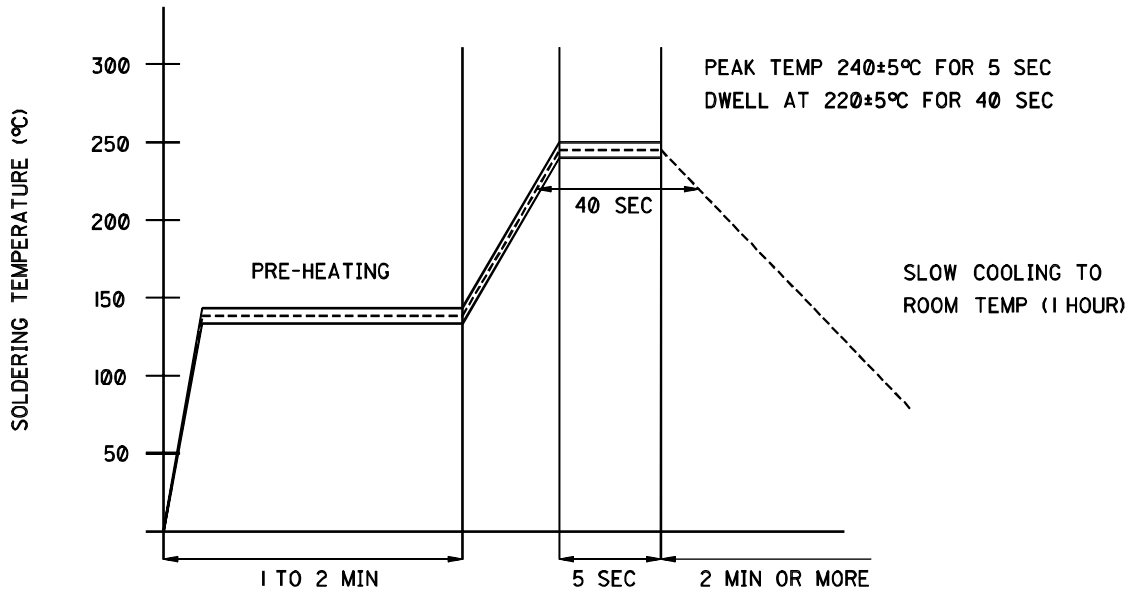
Appendix 6:



Multiaxis Function Test (5.9)

Appendix 7:

REFLOW SOLDERING TEMPERATURE PROFILE



Resistance to Solder Conditions (6.1)

REVISE ON PC ONLY		TITLE:	
C		PRODUCTION SPECIFICATION FOR 2.54mm SIM Conn SMT	
	REV.	DESCRIPTION	THIS DOCUMENT CONTAINS INFORMATION THAT IS PROPRIETARY TO MOLEX INC. AND MUST NOT BE USED WITHOUT WRITTEN PERMISSION
DOCUMENT NUMBER PS-99020-0071		FILENAME PS0071.LWP	SHEET 12
ES-40000-3996 REV. A SHEET 4 95/MAR/10 EC U5-0926 DCBRD03.LWP			



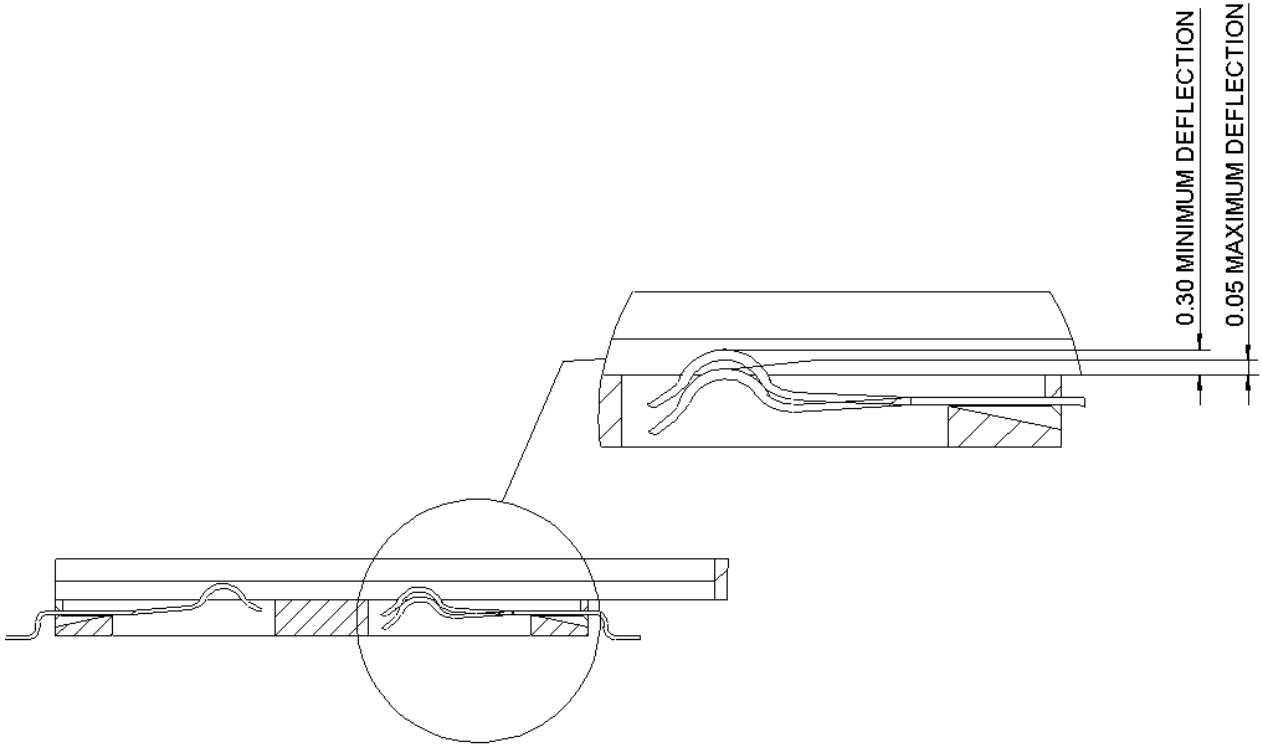
PRODUCT SPECIFICATION



LANGUAGE

English

Appendix 8:



Maximum Normal Force (5.10)

REVISE ON PC ONLY		TITLE:	
C		PRODUCTION SPECIFICATION FOR 2.54mm SIM Conn SMT	
		THIS DOCUMENT CONTAINS INFORMATION THAT IS PROPRIETARY TO MOLEX INC. AND MUST NOT BE USED WITHOUT WRITTEN PERMISSION	
REV.	DESCRIPTION		
DOCUMENT NUMBER PS-99020-0071		FILENAME PS0071.LWP	SHEET 13
ES-40000-3996 REV. A SHEET 4 95/MAR/10 EC U5-0926 DCBRD03.LWP			